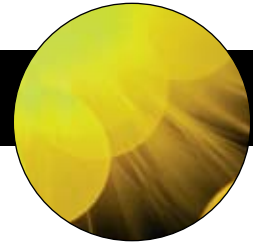


Compensation Standards

Fluorescence Carryover Correction



BEADS • ABOVE THE REST



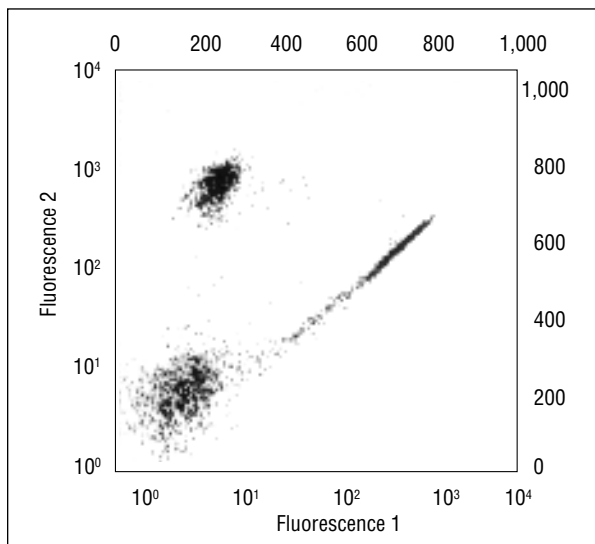
Daily compensation with Bangs' Compensation Standards eliminates carryover to ensure accurate results.

COLOR COMPENSATION

What is compensation?

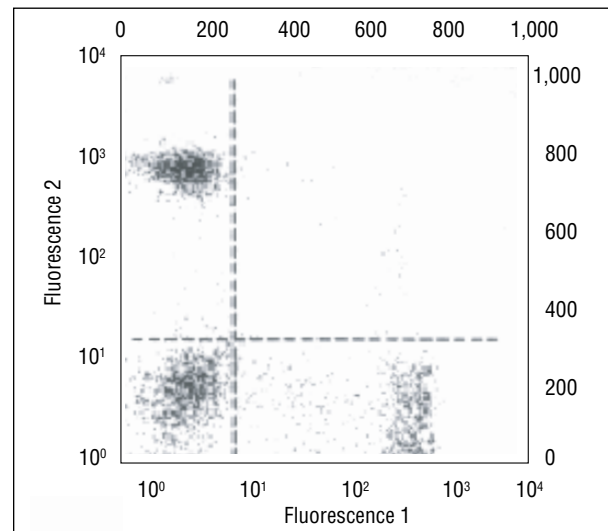
In multicolor analyses, fluorescence compensation corrects for spectral overlap of fluorochrome emissions (carryover) which cannot be separated by optical fibers or dichroic mirrors alone. Compensation is performed by electronically subtracting the proportion of fluorescence signal equal to the carryover that should not be detected by a particular PMT.

For example, the emission spectrum of FITC is quite broad and continues past 600nm, while PE has an emission peak around 580nm, with a significant contribution below 560nm. In the absence of proper compensation, the signals from each fluorochrome overlap and are detected in the wrong channels.



Cells demonstrating proper fluorescence compensation

Proper fluorescence compensation requires a reference material labeled with the same fluorochromes as the stained cell sample. Such standards are used to determine the correct percentage of fluorescence signal to be subtracted from the other channels. To that end, Bangs offers two approaches to color compensation.



FITC-labeled cells viewed before color compensation

FITC/PE COMPENSATION STANDARD

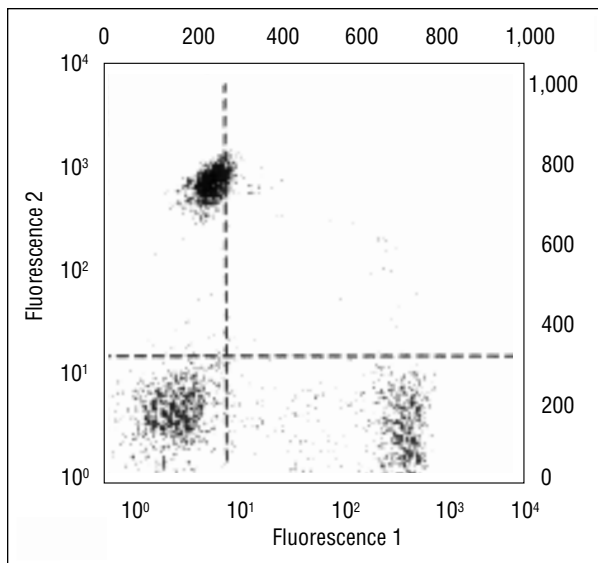
Pre-labeled Compensation Kit

Bangs' FITC/PE Compensation Standard provides an easy, cost effective means of setting compensation. The kit is composed of four microsphere populations: one labeled with FITC, one with PE, one with both FITC and PE, and, finally, a population of AutoFluor™ microspheres. The AutoFluor microspheres exhibit autofluorescence similar to that of unstained lymphocytes, and act as a "blank" for compensation purposes.

SIMPLY CELLULAR® COMPENSATION STANDARD

Goat anti-Mouse IgG Compensation Kit

The Simply Cellular Compensation Standard is a mixture of two Simply Cellular microsphere populations capable of binding high and low levels of the mouse monoclonal IgG antibody used in your assay. Simply stain the Simply Cellular Compensation Standard just as you would stain your cells. The resulting microspheres will appear "positive" in two different fluorescence intensities. The Simply Cellular Compensation Standard is ideal for setting the compensation for less common fluorochromes.



FITC-labeled cells viewed after color compensation with Simply Cellular® Compensation Standard

COMPENSATION STANDARDS

Cat. # Product Description

820	FITC/PE Compensation Standard
550	Simply Cellular® Compensation Standard



Bangs Laboratories supplies a large variety of uniform polymeric and silica microsphere products setting the standards for diagnostic, research, and flow cytometry applications. No matter the project, we have a product that serves or we'll work to custom-design a solution to fit. And that's not the half of it.

We also stand behind our products. Regardless of the size of your question or the size of your company, we offer tech support, absolutely free.

Sound interesting? Give us a call.



317.570.7020

Compensation Standards. Revision 1.03