

9025 Technology Dr. • Fishers, IN 46038-2886
800.387.0672 • 317.570.7020 • Fax 317.570.7034
info@bangslabs.com • www.bangslabs.com



BEADS ● ABOVE THE REST™

Description

The QuantumPlex kit is designed to be used as a multiplexing platform, allowing for the efficient, qualitative analysis of a sample for multiple analytes, or the high throughput screening of multiple samples.

QuantumPlex kits are available in five-bead sets of microspheres sized 4.4µm (Catalog Code 205), 5.5µm (Catalog Code 208), and in ten-bead sets comprised of the two (Catalog Code 209). Each five-bead set consists of five (5) bead populations internally dyed with varying intensities of Starfire Red™ fluorescent dye (fluorescent in FL3). Each bead is uniformly coated with goat anti-Mouse IgG (GAM). The GAM coating allows for the easy conjugation of analyte-specific mouse monoclonal antibodies to the surface of each bead. The beads are then incubated with a sample and washed before a fluorescently-tagged reported antibody is added. After a second wash and resuspension, the beads may be analyzed with a flow cytometer to determine which samples contained the analyte.

Characteristics

Mean Diameter: 4.4µm (Catalog Code 205) or 5.5µm (Catalog Code 208)
Particle Concentration: 1 x 10⁶ microspheres/mL

Material

Material Supplied

- QuantumPlex microspheres: bottled individually in 1mL, 5mL, or 10mL aliquots

Material Required

- Mouse monoclonal antibody specific to the analyte(s) of interest
- Buffered wash solution
- Fluorescently-labeled reporter antibody (fluorescent in FL1 or FL2)

Procedure

Researchers are advised to optimize the use of particles in any application.

The QuantumPlex kit allows for flexibility in designing individual experiments. The preparation procedure outlines the conjugation of a single monoclonal antibody to the QuantumPlex bead. Conjugating each of the beads to an antibody specific to a different analyte yields a kit capable of testing a single sample for multiple analytes. The user may choose instead to conjugate antibodies specific to two or more analytes to each bead, producing a kit ideal for screening multiple samples at once. The specific application is to be determined by the user. It may be helpful to make a table to keep track of which antibodies have been conjugated to each bead population. The following outline serves as a guide, and may be modified to reflect the user's specific application.

Preparation of Microspheres

1. Vigorously shake or vortex the bottle prior to use to ensure uniform suspension of the beads.
2. Immediately remove 10µL of solution to be labeled with mouse monoclonal antibody. *Note:* The 10µL volume reflects the amount needed to conduct one test using the given bead population. For ease of use, the entire 1mL may be labeled all at once, and then stored for use with each test.
3. Using an excess of antibody, conjugate the analyte-specific mouse monoclonal antibody to the bead using established protocols. *Note:* One approach is to simply incubate the beads and the mouse antibody together for 30 minutes. See also TechNote 101,

ProActive® Microspheres, for sample conjugation protocols.

4. Wash the beads to remove any unbound antibody.
5. Resuspend beads in ~100µL buffer.

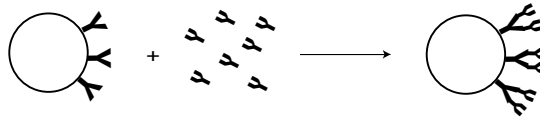


Figure 1: Mouse antibody conjugated to QuantumPlex™ GAM microsphere

Testing Samples

1. Incubate prepared beads with 100µL sample(s) for 30 minutes. (The volume of sample used may be adapted to the specific application.)
2. Wash beads to remove nonspecifically bound analyte. Repeat the wash step.

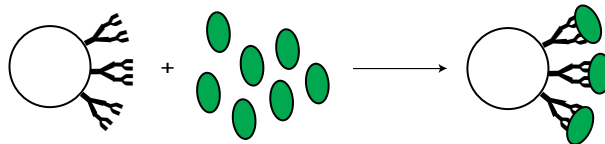


Figure 2: Sample analyte bound to QuantumPlex™ microsphere after first incubation

3. Incubate the beads with 20µL of the appropriate fluorescently-labeled antibody for 30 minutes.
4. Wash beads to remove nonspecifically bound antibody. Repeat the wash step.

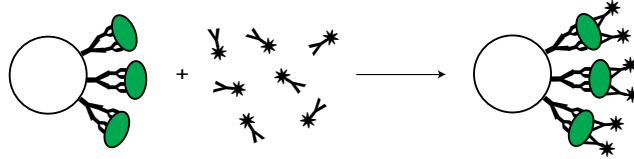


Figure 3: “Sandwich” complex formed with addition of reporter antibody

5. Combine all beads in one tube and acquire data events using a flow cytometer.

Data Analysis

1. Gate on the single population(s) on a Forward Scatter vs. Side Scatter plot. (Figure 4)
2. Using the FL1 and/or FL2 channels (depending on the reporter antibodies used), determine whether or not any bead populations tested “positive” for the analyte. (Figure 5) *Note:* A positive bead will produce a fluorescent peak in the FL1 or FL2 channel. The minimum fluorescence intensity needed to be considered “positive” is based on the Relative Channel Value (RCV) of the peak. It is up to the investigator to determine what threshold RCV value will constitute a “positive” result.
3. Using your flow cytometry analysis software, determine which beads produced positive results. The use of “back-gating” may simplify this task. (Figure 6).
4. Based upon the beads that produced positive results, determine which samples contained the analyte, or which analytes the samples contained.

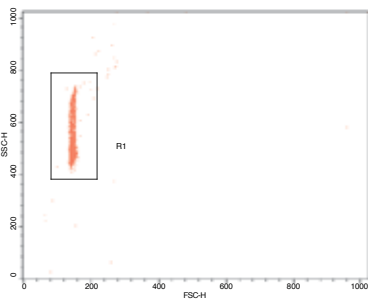


Figure 4

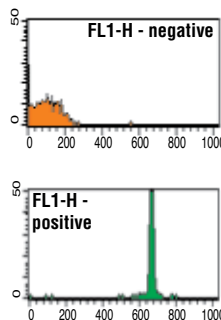


Figure 5

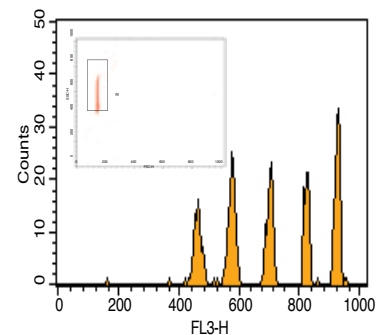


Figure 6



Storage and Stability

Store at 2-8°C. Freezing may result in irreversible aggregation and loss of binding activity. QuantumPlex kits are stable for 12 months from date of purchase, provided the product is handled in accordance with the manufacturer’s recommendations. The beads should be kept in the bottles in which they are shipped. Do not expose beads to intense light sources for extended periods of time.

Safety

This particle suspension contains sodium azide. Sodium azide may react with lead and copper plumbing to form explosive metal azides. Upon disposal of material, flush with a large volume of water to prevent azide accumulation. Please consult the Material Safety Data Sheet for more information.

This product is for research use only and is not intended for use in humans or for *in vitro* diagnostic use.

Ordering Information

Catalog Code	Description	Sizes
205	QuantumPlex™ anti-Mouse 4.4µm (5 dye intensities)	1mL, 5mL, or 10mL
208	QuantumPlex™ anti-Mouse 5.5µm (5 dye intensities)	1mL, 5mL, or 10mL
209	QuantumPlex™ anti-Mouse 4.4µm and 5.5µm (2 x 5 dye intensities)	1mL, 5mL, or 10mL

Order online anytime at www.bangslabs.com.